

myWorkbench 5.2 User Documentation

**Copyright ©2002-2003
Toysoft Development Inc.
All Rights Reserved.**

www.toysoft.ca

Table of Contents

1.	Introduction.....	3
2.	System Requirement.....	3
2.1	Compatibility.....	3
3.	Installation	3
3.1	PamOS® 3.5 and PalmOS® 4.0	4
3.2	myWorkbench Theme	4
4.	Launching myWorkbench.....	4
4.1	Sony Clie® High Resolution for PalmOS® 4.x	4
5.	myWorkbench Desktop	5
5.1	myPalm	6
5.2	myCard	6
5.3	TranshCan.....	6
5.4	myWorkbench Desktop Menus	6
5.4.1.1	Preference	7
5.5	Changing myWorkbench Colors.....	8
5.6	Backup Files	8
5.6.2	Restoring a Backup.....	11
5.7	Orphaned Databases	12
5.8	Media Type Manager	13
5.9	System Menus	16
5.9.1	Info.....	17
5.9.2	Format Card.....	17
5.9.3	Rename Card.....	18
5.9.4	Soft Reset	18
6.	myPalm Explorer.....	19
6.1	File Action Popup	19
7.	myCard Explorer	20
8.	Explorer Icon Toolbar	20
8.1	Previous Folder.....	22
8.2	Delete Files and Folder	22
8.3	Copy Files and Folder	22
8.4	Move Files and Folder	22
8.5	File and Folder Information.....	23
8.5.1	Changing The File Attributes	23
8.6	Open a Folder	23
8.7	Create a New Folder.....	24
8.8	Beam Files.....	24
8.8.1	Beaming from the Card	24
8.8.2	Receiving a Beam.....	24
8.9	Play Wave Files (Palm Tungsten Only).....	24
8.9.1	Playing Kinoma™ Videos.....	24
8.10	Launching Files and Databases.....	24
8.10.1	Launching from the Card (PalmOS 5.0 Only)	25
8.11	View Types and Sorting.....	25
8.12	Toggle myPalm and myCard Explorer	26
8.13	Sorting	26

myWorkbench	User Documentation	Version 5.2
-------------	--------------------	-------------

9.	Full View and Split View	26
9.1	Split View Mode	27
9.2	Active View	27
9.3	Tungsten T® D-pad Support	27
9.4	Explorer Menus	28
9.4.1	Hex View	28
9.4.1.1	Viewing Bitmap and Playing Wave resources	29
9.4.2	Zip and Unzip Files	29
9.4.2.1	Windows Desktop Zip Files	30
9.4.3	Export Directory Listing to MemoPad	30
9.5	Quick Search	31
9.6	Filters	31
10.	myWorkbench System Folders	32
11.	View files with MultiMail Plugins for PalmOS® 3.5 and 4.x only	32
12.	Converting Wave file to Sony® Clie Format	33
12.1	Converting a Wave File using GoldWave Tutorial	34
12.2	Download Wave Files	36
13.	Viewing JPG on PalmOS® 5.x Palms	37
14.	User License	38
15.	Copyright	38
16.	Disclaimer	38
17.	Limitation of Liability	39
18.	Termination of License	39
19.	Technical Support	39
20.	Zlib compression library	39

1. Introduction

myWorkbench is robust, powerful and advanced PalmOS® application file manager. myWorkbench lets you manage databases in RAM and files on the external card such as SD/MCC, Compact Flash and Memory Stick. In addition to the basic file management functions myWorkbench also does backup and restore databases from the external card, launch applications from ram and anywhere on the external card (PalmOS 5.0 only), maintain lists of orphaned databases, play wave files (only on the Palm® Tungsten), manage media type files, magicBin™ to save all deleted databases and applications from RAM to the card automatically (Only on PalmOS® 3.5x and PalmOS® 4.x), Hexview databases, compress and uncompress files, view doc, text and html files on PalmOS® 3.5 and OS 4.x and many more features.

2. System Requirement

- PalmOS® 3.5 and higher
- 250K of free memory
- External card optional

2.1 Compatibility

- Palm® Tungsten T/T2/T3/E, Palm® Tungsten W, Palm® Tungsten C, Palm® Zire 71/21, Palm® IIIc, Palm® IIIx, Palm® V, Palm® Vx, Palm® VIIx , Palm® M100, Palm® M105, Palm® M125, Palm® M130, Palm® M500, Palm® M505 and Palm® M515
- Handspring® Visor, Prism® and Treo® series
- Sony Clie® series all models
- Samsung® smartphone
- Acer®
- Kyocera® smartphone
- HandEra® H330
- Legend®
- Garmin®
- Tapwave® Zodiac

3. Installation

To install myWorkbench double click on the files myWB.prc, SysZLib.prc and then press the HotSync® button on the cradle. The HotSync® manager will then install the files on to your Palm.

myWorkbench	User Documentation	Version 5.2
-------------	--------------------	-------------

3.1 PamOS® 3.5 and PalmOS® 4.0

Included in PalmOS® 3.5 and PalmOS® 4.x is magicBin™. To install magicBin™ unzip the magicBin file and double click on the file magicBin.prc. *See magicBin manual in the zip file.*

3.2 myWorkbench Theme

myWorkbench Theme comes with a wall paper and different button icons for different Palm devices. Install myWBTheme.pdb file to your Palm. Make sure you install the correct version in the following folder.

Folder Name	For Palm
myPictures\PalmOS5 320x320	Palm Tungsten T/C/W, Z71 Sony TG (320x320)
myPictures\SonyNX_NV_NZ 320x480	Sony Clie NX, NV or NZ (320x480)
myPictures\SonyT_S_Series 320x320	Sony Clie T and S series (320x320)
myPictures\8bit color_greyscale 160x160	All Palms with 8bit color and greyscale

You can install myWBTheme.pdb in ram or move the file to the card in **/myPictures** folder. If the theme cannot be found then the default theme will be used.

4. Launching myWorkbench

4.1 Sony Clie® High Resolution for PalmOS® 4.x



If myWorkbench does not display in high resolution then exit myWorkbench to the Launcher and launch



the Prefs application and select **HiRes** from the popup and place a check mark in the **Enable High Resolution Assist** checkbox. See the below diagram.



Diagram: Sony High Resolution Assist

From your Launcher look for the icon  or  and tap on it launch it. If you cannot find the icon use the scroll bar and scroll down.

5. myWorkbench Desktop

myWorkbench is designed differently from the traditional file manger. When you launch myWorkbench the first thing you will see is myWorkbench's desktop. See the following diagram.

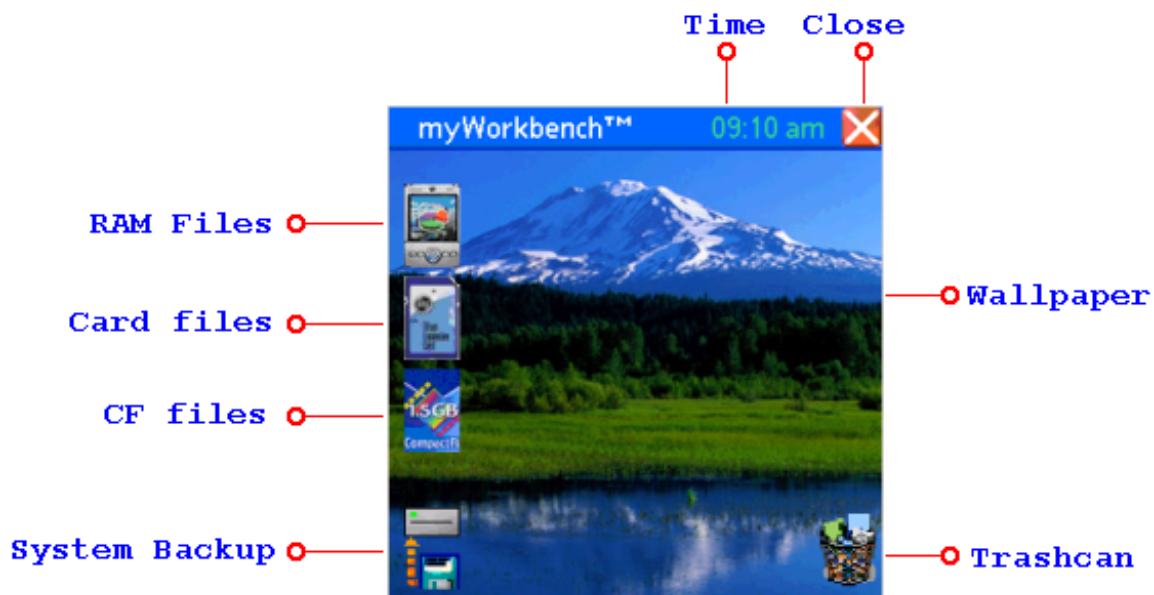


Diagram 1: myWorkbench desktop with Theme

5.1 myPalm



myPalm



If you want to explore the databases in RAM you tap on the myPalm icon. This will open the RAM explorer window.

5.2 myCard



myCard



If you want to explore the databases and files on the card you tap on myCard icon. This will open the Card explorer window.

5.3 TranshCan



TrashCan



The Trash Can is a placeholder for all your deleted files. myWorkbench **does not** automatically put the deleted file in the Trash Can when you delete a file. If you want to delete a database or a file and want to keep a backup copy you will have to manually move the database or file to the Trash Can folder in the Explorer window.

5.4 myWorkbench Desktop Menus

5.4.1 Options Menus

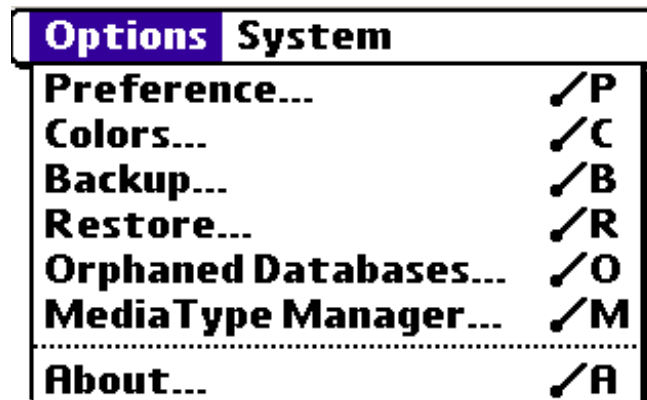


Diagram 2: myWorkbench Options Menu

The Options menu is only available on the Desktop and its not available in the Explorer windows eg: myPalm or myCard.

5.4.2 Preference

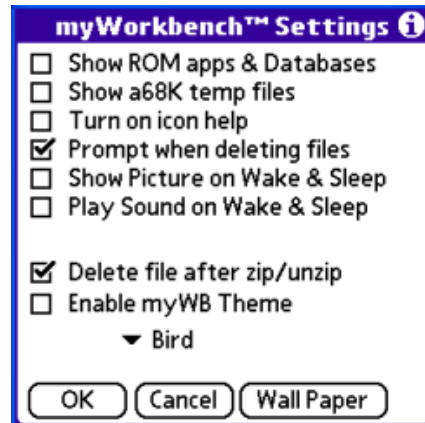


Diagram 3: myWorkbench Preference

Descriptions

- ☐ **Show ROM apps & Databases** – if this is checked myWorkbench will not show databases and applications that are in ROM. Read Only Memory databases and applications are files that are burned into the PalmOS® and cannot be deleted.
- ☐ **Show a68K temp files** – if this is checked myWorkbench will show all the files that PACE creates. These are temporary files for the ARM® environment.
- ☐ **Turn on icon Help** – if this is checked myWorkbench will display the help text when you tap on the icon in the tool bar.
- ☐ **Prompt when deleting files** - if this is checked myWorkbench will prompt you each time you delete a database or a file.
- ☐ **Show Picture on Wake & Sleep** – if this is checked myWorkbench will display a picture when the Palm is shut down and during start up. Please email as at support@toysoft.ca or visit our website at <http://www.toysoft.ca/mywb4.html> to download the startup pictures.

Note: On the Sony® myWorkbench does not support the Sony® launcher. It will crash if you turn this feature on. myWorkbench supports 3rd party launchers such as SilverScreen, Zlauncher, LauncherX and many others.

Do not turn on this feature if you have wavAlarms installed on your Palm.

- ☐ **Play Sound on Wake & Sleep** – if this is checked myWorkbench will play a wave from the card when the Palm is shut down and during start up. Install wave files to the card in the **Audio** folder and rename them wake.wav and sleep.wav. *For the Sony® Clie please refer to the section in Converting wave files for the Sony® Clie*
- ☐ **Use SMS/BlueTooth for Beaming** – If this is checked myWorkbench will prompt you to select SMS or Blue Tooth when beaming a file.
- ☐ **Delete files after zip/unzip** – If this is checked myWorkbench will delete the original files after the files have been zipped or unzipped.
- ☐ **Enable myWB Theme** – If checked then themes will be used. You can then select a wall paper.

Wall Paper - Wallpaper lets you select any JPG file to use as the background picture. WallPaper requires the myWB JPG viewer to be installed. This feature is only available for PamOS® 5 and higher.

5.5 Changing myWorkbench Colors

myWorkbench starts with the default color scheme showing below.

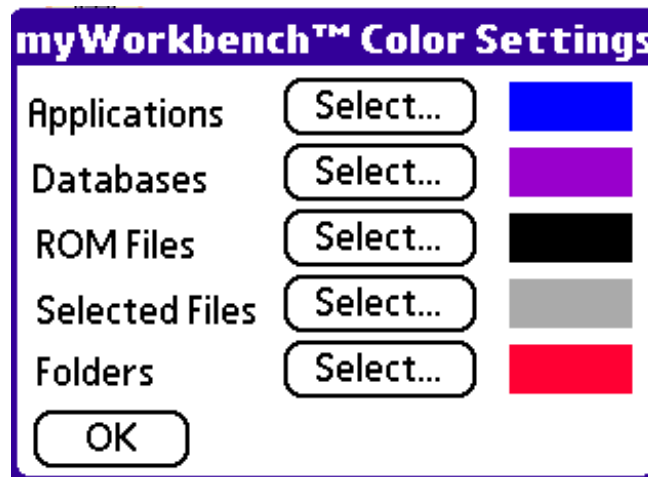


Diagram 3.1: myWorkbench Color Scheme

5.6 Backup Files

myWorkbench can backup all the databases and applications from RAM to the card. myWorkbench creates a folder called **/Backup** on the card. Each time you do a new backup myWorkbench will create a new folder and will copy all the databases and applications there. You can select to backup all files, applications only or databases only. myWorkbench can also compress all the files during backup.

Note: myWorkbench uses Zlib to compress and decompress files. Compression is a slow process and it could take a long time to backup your entire Palm.



Diagram 4: myWorkbench Backup

The above diagram shows the backup files and memory size needed for the backup. Tap on the **Backup Type**: popup to select the type of back up you want. myWorkbench will update the file count and size.

To compress all the files check the **Compress Files** checkbox. The files will be compressed and saved to the backup folder on the card. All the files will have the extension .zip. myWorkbench does not compress all the files into one single file. They are individually compressed.


Note: Files zipped with myWorkbench can be unzipped on the Windows desktop with programs such as WinRAR® and Winzip®

Auto Backup

To program the auto backup feature tap on the popup and select the type of auto backup. myWorbkench will do a backup at midnight for the selected day.

Note: during auto backup myWorkbench does not compress the files.

Card Section

myWorkbench supports multiple volumes. You can select the card to which the files will be backup to by selecting **Card:**  **POSESlot1** popup control.

Start Manual Backup

If you do not have enough memory on the card the **Start...** button will not be visible and a message will be displayed. You cannot perform a backup if there is not enough RAM on the card.

You must use myWorkbench to restore your backup especially if the files are compressed.

If Zlib library is not installed on the Palm then the **Compress Files...** checkbox will not be visible.

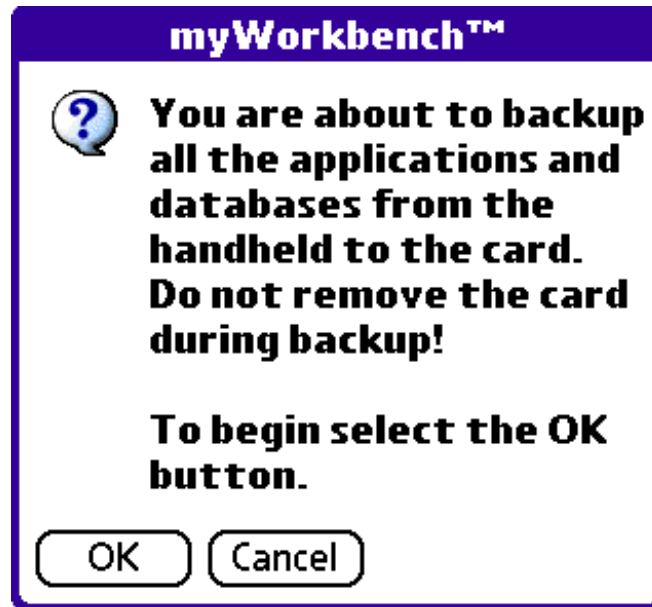


Diagram 4.1: Backup Message

When you start the backup you will be prompted with the above message. To begin the back up process, tap on the OK button. To cancel the back up, tap on the Cancel button. If you don't have enough memory on the card myWorkbench will display an error message.

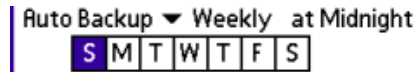
Caution: Do not remove the memory card during backup and restore. If you do you could potentially damage the card and render inoperable.

5.6.1 Daily Backups

If you had selected **Daily Backups** Auto Backup ▼ Daily at Midnight
▼ Keep 3 days of backups you can select how many backup copies to keep before myWorkbench rotates the backup. Eg: if you had selected to Keep 3 days of backups then myWorkbench will backup 3 days of new backups before it rotates. During the rotation the old backup is deleted before the new backup. So after 3 days of backups the first day's back is deleted and a new backup is performed on the 4th day.

5.6.2 Weekly Backup

A weekly backup is performed once every week. Example if you had selected:



myWorkbench will backup every week at Sunday. A new backup will be created and there is no rotation like the daily backup. You must manage the backups so that you card will not be filled.

5.6.3 Restoring a Backup

The restore function lets you restore databases and applications from a backup. Restore is usually used if your Palm was cold booted.

Cold Reset

After a cold reset launch myWorkbench from the card. There should be a copy of myWorkbench in the /palm/launcher folder unless you have deleted yourself. Goto the Options menu and select the menu item Restore... The following window will be displayed.

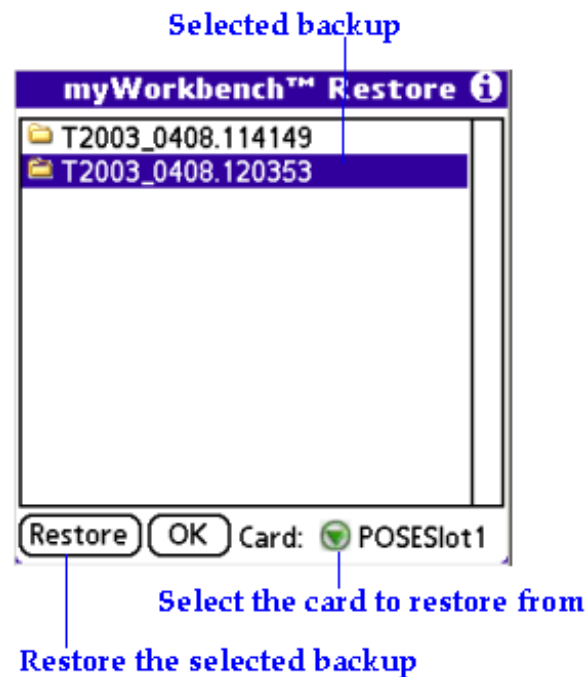



Diagram 5: Restore Window

Multiple Volume Support

You can select the card to which to restore from by selecting the  popup.

EruWare Compact Flash Driver

When you cold boot the Palm the EruWare Compact Flash driver will not be available and you cannot restore from the Compact Flash card until you install the EruWare driver and mount it.

The Restore window lists all the available backups to restore from the selected volume. The backup file name is read as follows:

Back up name from item 2 from the diagram. T2002_1116.095157

T2002 – means it was backed up in year 2002

1116 – means the month and day. 1116 means November 16

095157 – after the period is the time that was backed up. 09 – nine am, 51 – minutes, 57 seconds

To restore a given backup select the back up date in the list and then select the **Restore...** button. To cancel the restore, select the **OK** button and return to the Desktop.

Compression Library

myWorkbench copies itself and the zlib compression library to the card in /palm/launcher folder. When you cold boot your Palm all the files are lost. When you restore a backup using myWorkbench, myWorkbench requires the zlib in ram because files maybe compressed during the backup. Prior to myWB 4.8 you must copy the zlib manually. Now myWB will always makes sure the zlib exists in ram and on the card.

If you get an error message saying that the zlib library is not found then just use myWB to copy the zlib files from the card in /palm/launcher to ram.

5.7 Orphaned Databases

Orphaned databases are databases that do not belong to an application. Orphaned databases typically happen when an application creates a database and does not assign the application creator id to it. This becomes a nightmare when the application is deleted from the device and the databases that it created are not deleted. Take this example. You have just installed a new application called KillerApp and when you launched KillerApp it creates several databases that it does not own. You then realized that KillerApp is not what you thought a Killer application would be and you deleted it from the Launcher. Now you have

several orphaned databases left on your Palm and is taking up valuable RAM. This is where Orphaned Databases feature comes in handy.

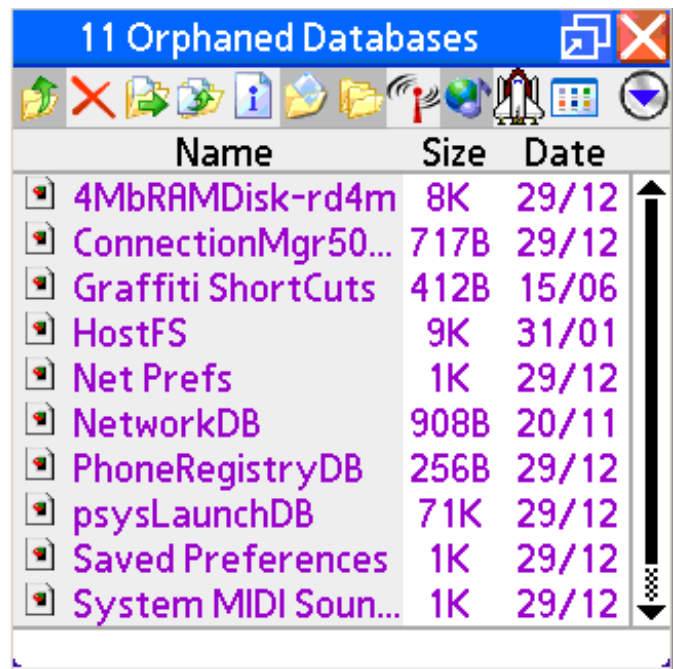



Diagram 6: Orphaned Databases

The Orphaned window lists all the orphaned databases in RAM. myWorkbench does not show orphaned databases on the card. If you know that an orphaned database in the list you can select it and then delete it. The best way to do this is to show the list with Creator and Type. You do this by selecting the View icon  from the Toolbar.

Caution: Be very careful when dealing with orphaned databases. Some orphaned databases are used by the PalmOS® and should not be deleted. Eg: **Saved Preference** and **psysLaunchDB** are system databases and if you delete them your Palm may not work properly and would require a cold boot and restore.

5.8 Media Type Manager

To launch Media Type manager select the Options menu from the myWorkbench desktop.

Media Type Manager lets you manage file types during HotSync® to the external card. Typically during HotSync® all PalmOS® databases (.pdb and .pqd) and applications (.prc) are installed in the default **/Palm/Launcher** folder on the card. For non-Palm files you must register the file type with the PalmOS® before HotSync® Manager will install the file to the card. For example: Files with the extension .gif and .jpg are installed to the **/DCIM/** folder on the card and extension .wav are installed to

the **/AUDIO/** folder. All these are default paths. With myWorkbench Media Type Manager you can change the default paths and have HotSync® Manager install the files to a different location on the card.

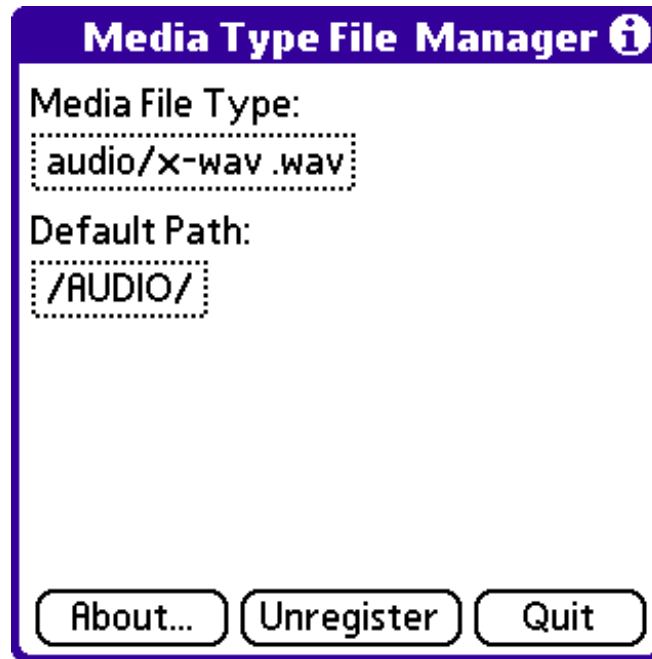


Diagram 7: Media Type Manager

Note: Media Type File Manager is only available and works for devices that have external card support.

To Unregister a Extension

To un-register an extension select the extension from the **Media File Type:** toggle box and then select the **Unregister** button. If an extension is already registered to a default folder you will have to un-register it first before you re-register it to a different default path.

To Register a Extension

To register a file type extension tap on the toggle button below the **Media File Type:** label and a list of default extensions will be displayed. Select the extension you want to register. The default path will be displayed. If there is no default path registered then you will see “**Tap here to register default path**” under the **Default Path:** toggle box. Tap on the toggle button below the **Default Path:** and the following window will be displayed.

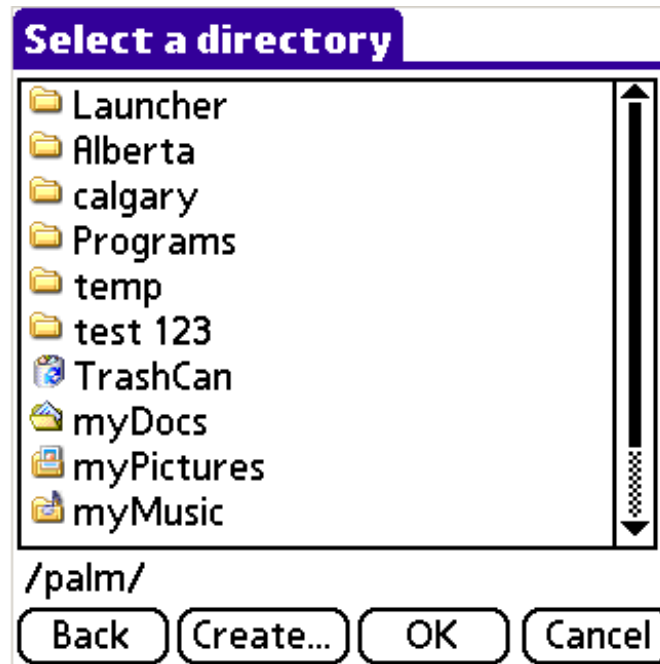


Diagram 8: Select default directory

Navigate the directory tree until you find the folder you want to register and then select the **OK** button. You can also create a new folder by selecting the **Create...** button. The **Back** button will move you back to the previous folder. To cancel select the **Cancel** button.

myWorkbench System Folders

See **10. myWorkbench System Folders** section.

Note: When you do a soft reset to your Palm, media type association is lost and you will have to select them again use Media Type File Manager.

5.8.1 About



Diagram 9: About

5.9 System Menus

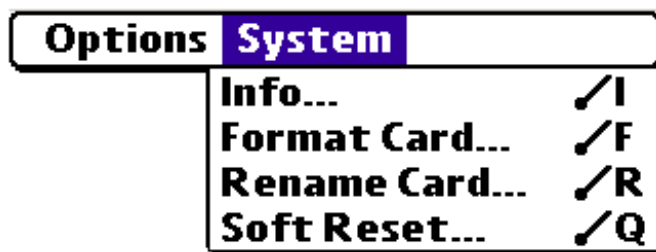


Diagram 10: myWorkbench System Menu

5.9.1 Info

Get information about your Palm.

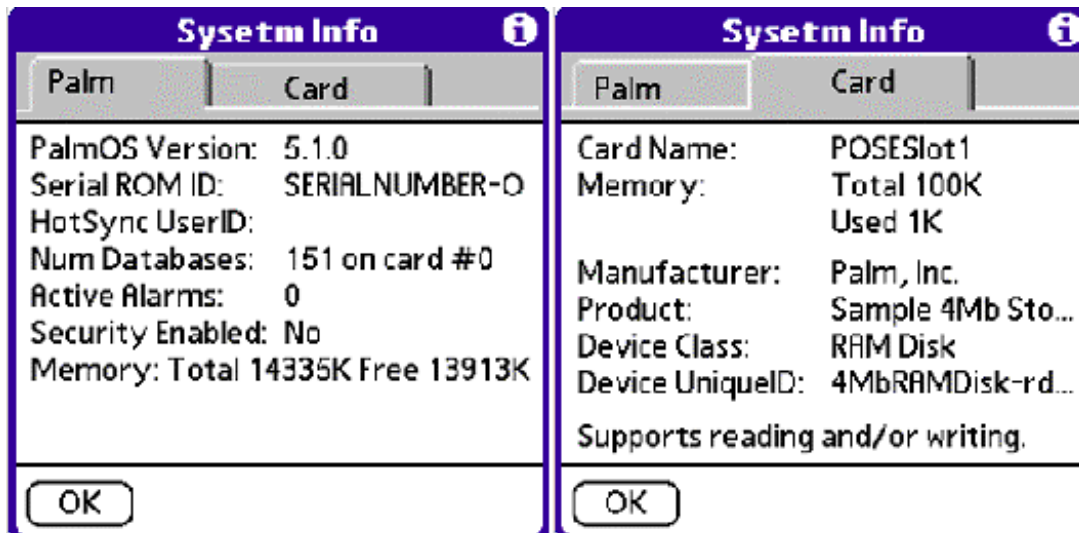


Diagram 11: Palm and Card info

5.9.2 Format Card

If you have a new external card you can format it by selecting the **Format...** menu item. All data on the card will be erased and cannot be recovered. The following confirmation dialog will be displayed. Additional dialog may be displayed.



Diagram 12: Format Card

Caution: Do not remove the memory card during formatting. If you do you could potentially damage the card and render inoperable.

EruWare Compact Flash Driver

Formatting the Compact Flash card using EruWare driver does not work at this point.

5.9.3 Rename Card

To rename the external card select **Rename Card...** from the menu item.

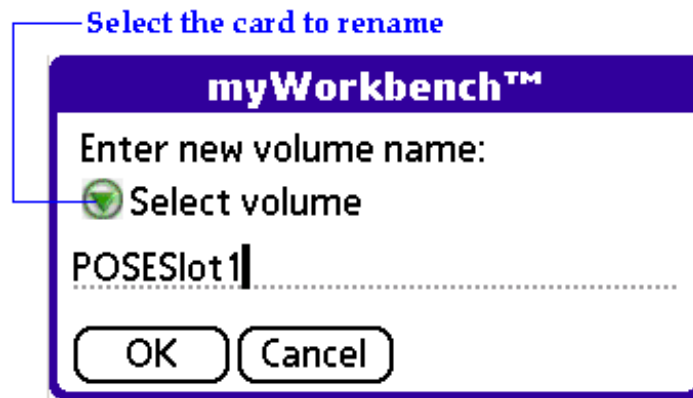


Diagram 13: Rename Card

5.9.4 Soft Reset

To perform a soft reset, select the **Soft Reset...** menu item. Data will not be lost during a soft reset.



Diagram 14: Soft Reset

6. myPalm Explorer

myPalm Explorer lets you explore databases and applications in RAM. Depending on the Preference settings myPalm Explorer may only display certain files. If some files are missing then check the Preference setting.

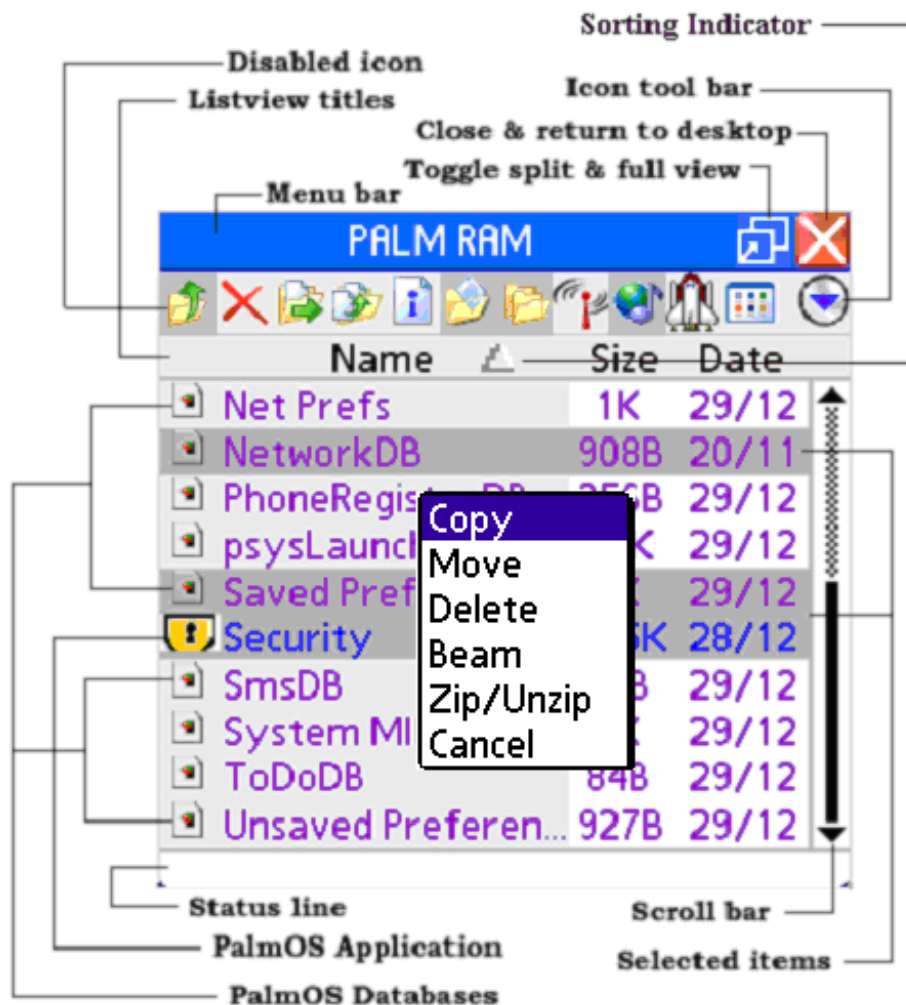


Diagram 15: myPalm Explorer

6.1 File Action Popup

To display the file action popup, select a file or files and then keep the pen down. The action item is the same as tapping on an icon in the toolbar.

7. myCard Explorer

myCard Explorer lets you explore files on the card.

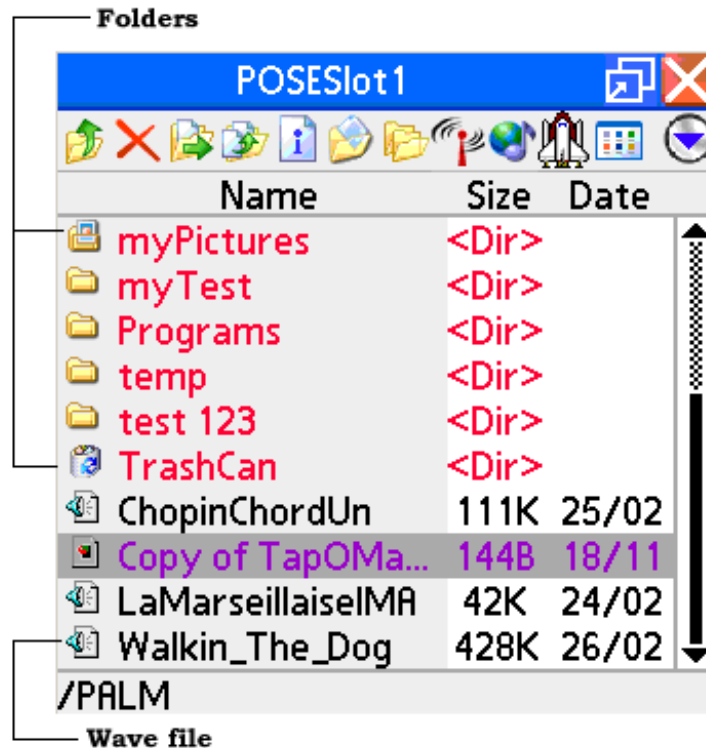


Diagram 16: myCard Explorer

8. Explorer Icon Toolbar

The icon toolbar performs action on all the selected items or files in the list. Eg: if you selected three items and select the Delete icon all the selected files will be deleted.

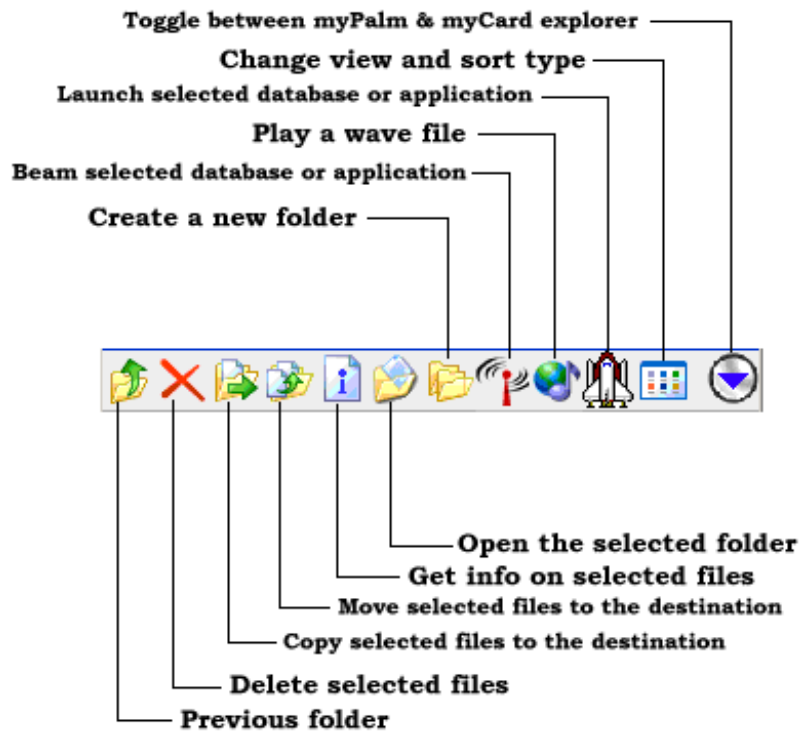


Diagram 17: Explorer icons for PalmOS® 5.0 and Sony color Clie®

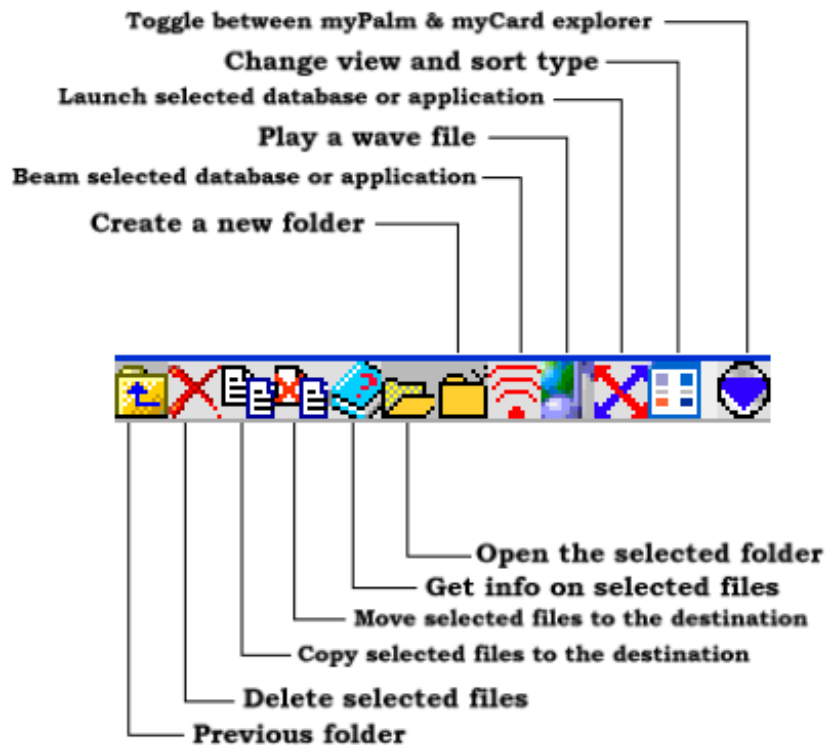


Diagram 17a: Explorer icons for PalmOS® 3.x and 4.x higher

8.1 Previous Folder



This icon is only active in myCard explorer view. This will move one up in the directory tree to the previous folder. You cannot move up anymore if you are at the root tree '/'.

8.2 Delete Files and Folder



This icon will delete all the selected databases, applications or files. If a folder is selected all the files and subfolders within that folder will be deleted. Databases and Applications that are **Copy Protected** will be deleted. ROM databases and applications cannot be deleted.

8.3 Copy Files and Folder



This icon will copy all the selected files to the destination.

View Type	Source (Active View)	Destination
Full View	myPalm (RAM)	You select a folder
Full View	myCard (Card)	RAM
Split View	myPalm (RAM)	Current folder
Split View	myCard (Card)	Current folder

Table 1: Copy mode

When copying folders to folders from the external card all sub-folders will be copied.

8.4 Move Files and Folder



This icon will move all the selected files to the destination.

View Type	Source (Active View)	Destination
Full View	myPalm (RAM)	You select a folder
Full View	myCard (Card)	RAM
Split View	myPalm (RAM)	Current folder
Split View	myCard (Card)	Current folder

Table 2: Move mode

When moving folders to folders from the external card all sub-folders will be moved.

8.5 File and Folder Information



This icon will give you information on the selected files and folders.

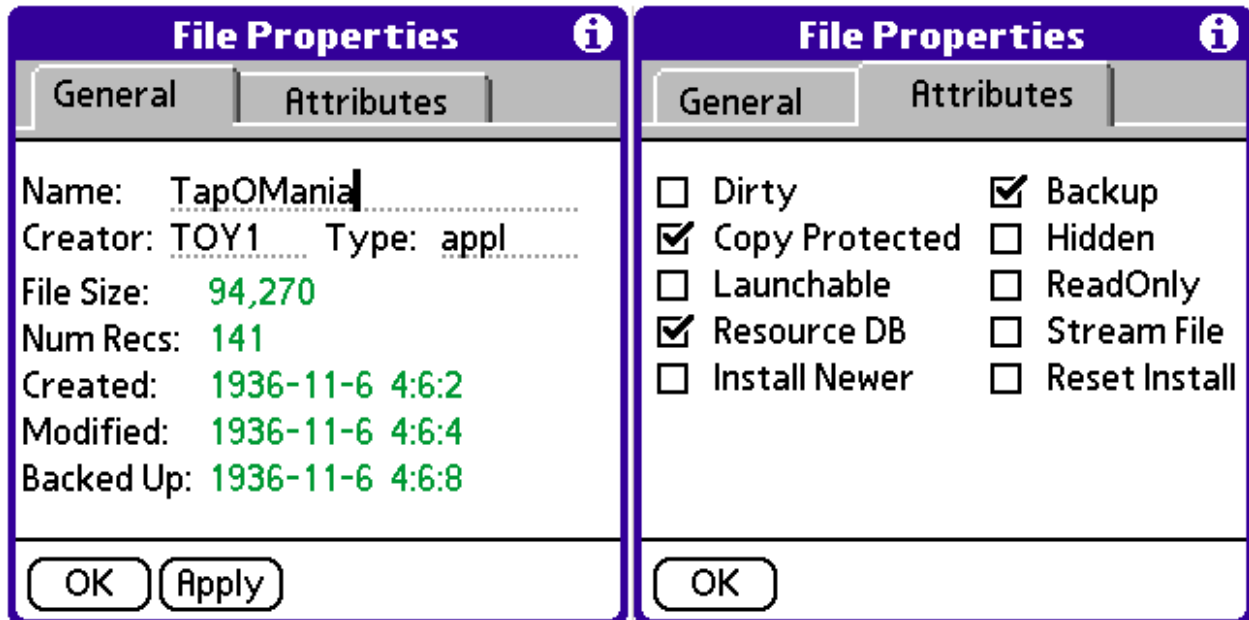


Diagram 18: File Properties

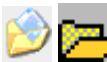
Caution: When getting information for the folder, do not remove the external card.

8.5.1 Changing The File Attributes

When the **Apply** button is enabled you can change any for available file attributes such as Creator ID, Creator Type and file name. Tap on the **Attributes** tab to show the file attributes. To apply the changes tap on the Apply button.

Caution: Be very careful when you start changing file attributes. The program may not work properly if it's modified.

8.6 Open a Folder



This icon will open the selected folder on the card. You can also double tap on the folder in the active list view to open it.

myWorkbench	User Documentation	Version 5.2
-------------	--------------------	-------------

8.7 Create a New Folder



This icon will allow you to create a new folder in the current folder. Keep the folder name short to avoid problems.

8.8 Beam Files



This icon will beam the selected files to another device. Unlike the PalmOS® Launcher myWorkbench will beam **Copy Protected** databases and applications.

8.8.1 Beaming from the Card

myWorkbench can beam any files on the card. To beam just select the file and tap on the beam icon.

8.8.2 Receiving a Beam

When receiving a non .pdb and .prc file myWorkbench will store the file in the **/myReceivedFiles** folder on the card. myWorkbench supports the following file extensions:

.C, .H, .CVS, .BMP, .JPG, .DOC, .TXT, .XLS, .MP3, .PNG, .HTML, .ZIP, .PDF, .GIF, .EXE

8.9 Play Wave Files (Palm Tungsten Only)



This icon will try to play the selected wave file. If the file is not a wave file an error message will be displayed. myWorkbench can only play wave files on the card. When playing wave files myWorkbench will play the entire file until it is finished before giving control back to the PalmOS®.

Note: Currently playing wave files is only supported on the Palm Tungsten T® model.

8.9.1 Playing Kinoma™ Videos

If you have Kinoma player installed on your Palm you can select the movie file and then select the Music icon to launch it. You can play video in RAM or on the card.

8.10 Launching Files and Databases



This icon will attempt to launch the selected database or application or view it. You can select a database name to launch and myWorkbench will find the application that is associated to it. Eg: if you

myWorkbench User Documentation	Toysoft, Inc.	Page 24 of 40
--------------------------------	---------------	---------------

myWorkbench	User Documentation	Version 5.2
-------------	--------------------	-------------

select the AddressDB file myWorkbench will launch the AddressBook. When launching by database name myWorkbench does not send the database name to the launching application.

Note: You can double tap on the item to launch it.

Supported Application Databases

You can launch the application's database directly. Select the database then tap on the Launch icon.

Here are the list of applications that myWorkbench can launch directly.

- Acrobat Reader v2.0
- QuickWord v6.0
- Kinoma player v1.5.1
- JPG files. (need myWBJPG viewer)

General Text File View

If myWorkbench cannot find the application that is associated to the database or file it will launch the internal text viewer. The viewer can view any text files, raw html files, C/C++ and H files, binary files will be read as text and might not display properly.

8.10.1 Launching from the Card (PalmOS 5.0 Only)

You can launch an application or database anywhere on the card. myWorkbench first copies the application and all the databases that are associated to the application to RAM and then launch it. If the application and databases are big it could take several seconds or even minutes to copy to RAM before it is launched.

When you exit the launched application myWorkbench will copy all the databases that belongs to the launched application back to the location where the application was launched on the card. This is unique in myWorkbench and it will ensure that any modified or created databases get sync'ed back to the card. You will never had to worry about losing data when launching applications from the card.

Note: Launching application from the external card is only available on PalmOS® 5.0 and higher.

8.11 View Types and Sorting



This icon allows you to change the view type and sorting order. You can also hide and show icons in the list.

myWorkbench User Documentation	Toysoft, Inc.	Page 25 of 40
--------------------------------	---------------	---------------

8.12 Toggle myPalm and myCard Explorer



This icon allows to you select between myPalm and myCard explorer. Full view will be the default view.

8.13 Sorting

Besides sorting by selecting the View Types icon, you can also sort the list by tapping on the Column heading (**Name**). The Up arrow indicates that the sort is by ascending. The Down arrow indicates descending.

9. Full View and Split View

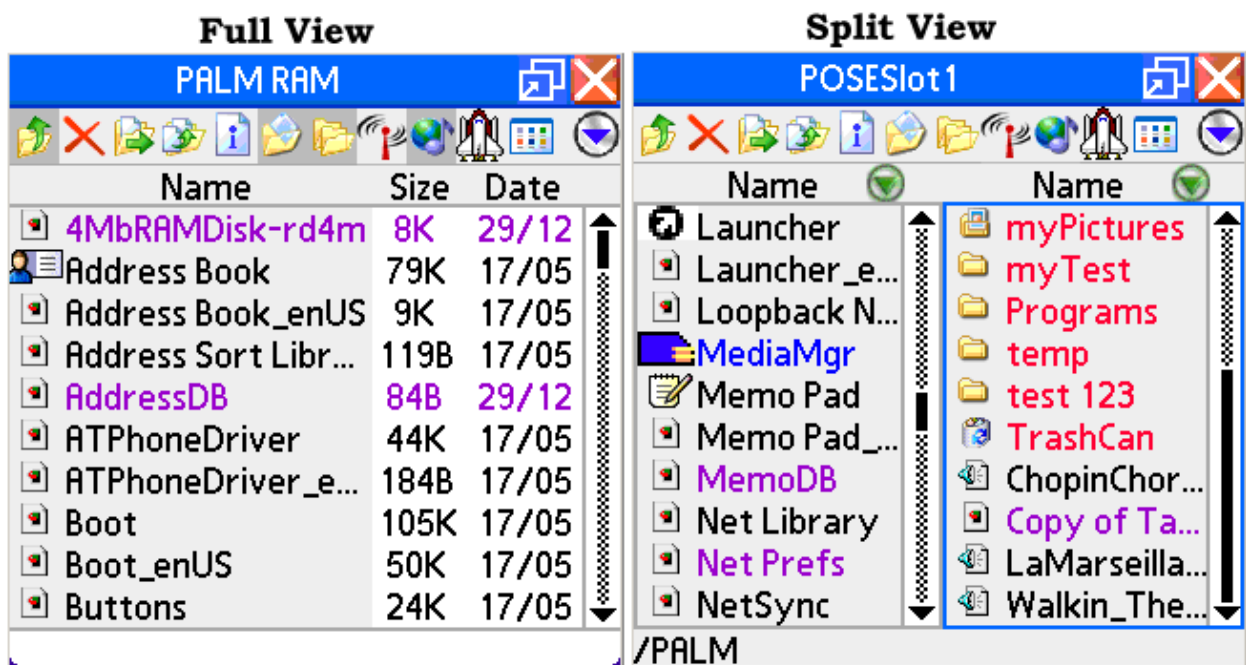


Diagram 19: View Modes

Full view mode always displays myPalm files which is RAM files.



In the Full View mode file size and file date are showing as default. Alternatively you can view it by creator id and type by selecting the View icon from the Tool bar.


PALM RAM

When displaying RAM files some icons are disabled and they are only enabled in myCard explorer window. These icons are: Previous Folder, New Folder, Open Folder and Play Wave files.

9.1 Split View Mode

The default split view is left view is RAM files and the right view is the card files. If no external card is available then both views will be the same.

To switch between Full View and Split View select the icon . At anytime you can switch between myPalm and myCard explorer by selecting the icon . This will put the list view in full view mode.

In the split view you can select the icon  to toggle between myPalm and myCard explorer view. You can have both views the same media.

9.2 Active View

The active view is high lighted by a blue box. All action will be applied to the active view. Eg: if you are copying files the source view will be high lighted and the destination view will not be high lighted. As you tap around the screen the high light box changes to reflect the active view.

9.3 Tungsten T® D-pad Support

myWorkbench supports the Tungsten T® D-pad.







View Mode	Left Button	Right Button	Center Button
Full view	  Move up a folder. Only if the active view is myCard	None	  Select Explorer view
Split view	Make the left view active	Make the right view active	  Select Explorer view for the active view

Table 3: D-pad support

9.4 Explorer Menus

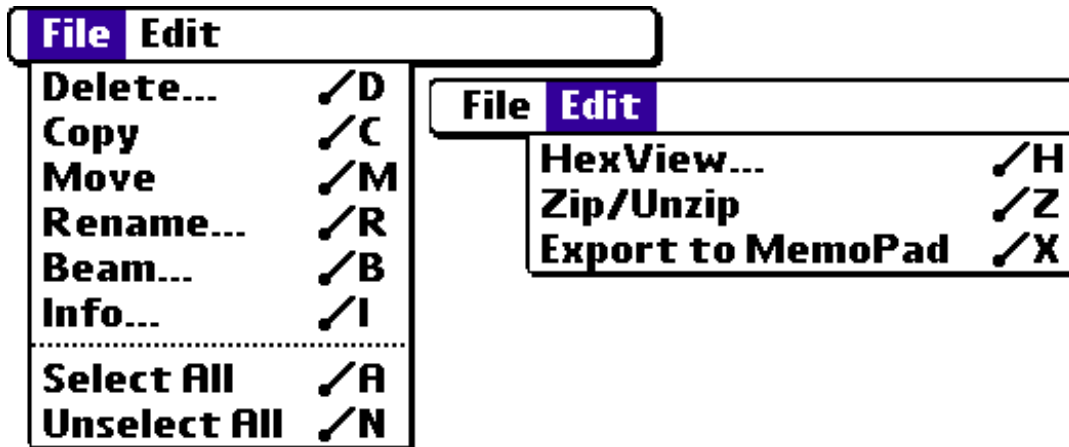


Diagram 20: Explorer menus

See section 8. **Explorer Icon Toolbar.**

- Select All – Select all the items in the list
- Unselect All – Unselect all the items in the list

9.4.1 Hex View

To hex view a database or an application tap on the file you want to view then tap on the Menu button and select the menu item **Hexview...** The following window will be opened.

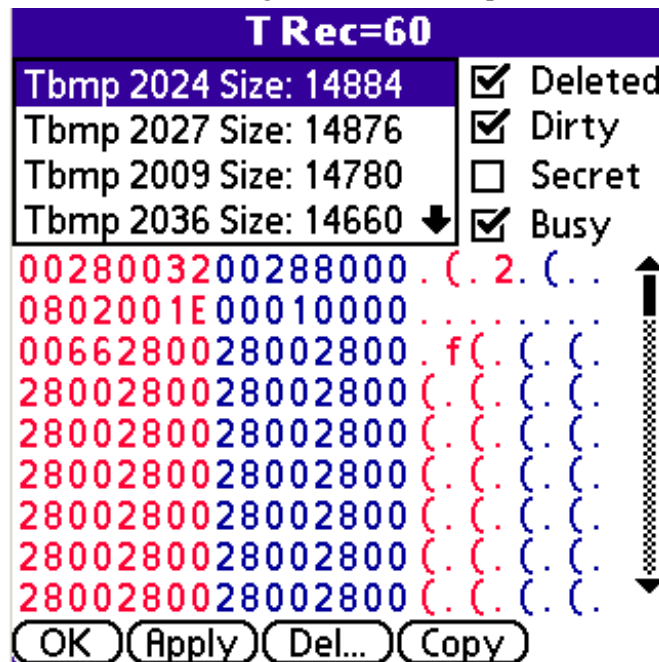


Diagram 21: Hex view

The file will be displayed in hex view. The top lists all the records or resources in the database. Use the arrow to scroll thru the items. When you tap on a item the hex data will be displayed. Use the scroll bar on the left to scroll down for more data.

The check boxes show the record's attributes. If the Apply button is visible you can change the record attributes. Be careful when you change the attributes. It may affect the way the application handles the modified record.

Buttons

- **OK** – Return to the Explorer view
- **Apply** – Change the attributes
- **Del...** - Delete the selected record from the database.
- **Copy** – Copy the selected record and not added to the database yet. Use Paste to add it.
- **Paste** – Paste the copied record to the database

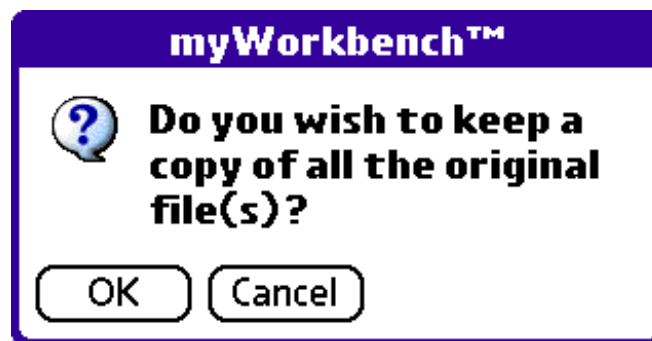
9.4.1.1 Viewing Bitmap and Playing Wave resources

To view the bitmap resource type 'Tbmp' select the record and then select the menu item **View Bitmap...** myWorkbench™ will try to view the bitmap.

To play a wave file resource type 'wave' select the record and then select the menu item **Play Wave...** myWorkbench™ will try to play the wave resource. Note: Playing wave resource file is only available on the Palm® Tungsten T.

9.4.2 Zip and Unzip Files

To zip and unzip files you need to install the **SysZlib.prc**. You can zip files in ram or stored on the memory card. To zip or unzip files select the files and then select the **Edit->Zip/UnZip** menu item. myWorkbench will prompt you with this message:



If you want to keep the original files after zip or unzip then select the **OK** button. If you do not want to keep the original files then select the **Cancel** button.

The following text is taken from <http://www.copera.com/zlib-armlet/index.html>

The following table shows deflate and inflate speeds on a device with a 68K processor (m515) and on a device with an ARM processor (Tungsten T). Results were obtained by running [Deflater](#) on the [Asian_24x24.PDB](#) 1.25 Meg Anki font database.

Device Name	Deflate Speed (bytes per second)	Inflate Speed (bytes per second)
Palm m515	5,300	21,700
Palm Tungsten T 68K version	7,200	28,600
Palm Tungsten T ARMlet version	152,000	169,000

9.4.2.1 Windows Desktop Zip Files

myWorkbench can unzip files created by Winzip on your Windows desktop. myWorkbench will decompress the files into the current folder. If the zip file contains subdirectories myWorkbench will retain the original folder structure.

WinRAR® and Winzip®

Files that are zipped with myWorkbench on the card can be unzipped using WinRAR® and Winzip® in Windows®.

9.4.3 Export Directory Listing to MemoPad

Select the menu item **Export to MemoPad...** to export the current directory listing. The record in MemoPad will be comma delimited. The format is as follows:

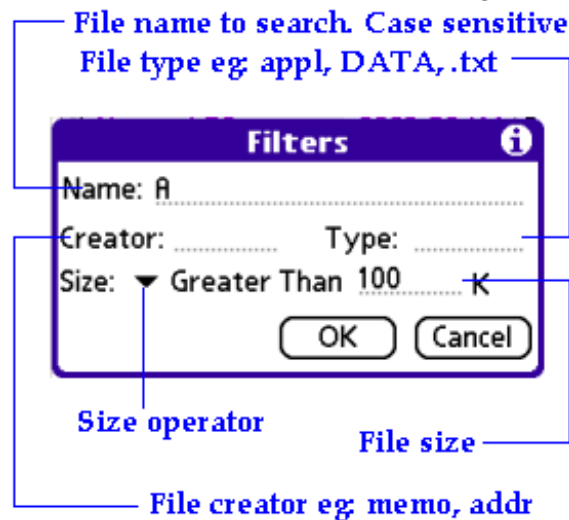
Path name, filename, file extension, file size, number of records, type, creator id, date

9.5 Quick Search

In the explorer window if you write a letter myWorkbench will search the list of all items and will scroll to there. Nothing will happen if the letter is not found.

9.6 Filters

Using the Filters you can narrow the file selections and only browse at the files that you are interested in. In the Explorer window select the **Edit->Filters** menu. The following window will be displayed.



When searching for file name it is case sensitive. For example A is different from a. myWorkbench will find the file if the search text is in the file name eg: if you search for “add” the following files will be returned. address, addictive

The creator and type are four characters code that identifies the file and type.

The file size is kilobytes and not the actual size.

The Filter search is OR condition meaning that the match is TRUE if any of the items in the search matches the file. This is not a AND search where Creator and Type have to be in the file to be true.

Explorer View and Search All

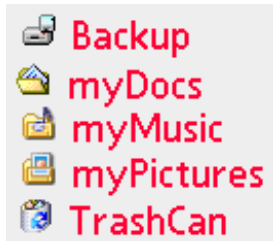
After you have performed a filter search the Explorer window will display the found items at all times until you perform a new search. Selecting from RAM and the card view will not refresh the browser items. You will have to perform a search all or close the Explorer window and return to the Desktop window.

myWorkbench	User Documentation	Version 5.2
-------------	--------------------	-------------

To perform a search all open the Filters window and just select OK. By default if you don't enter and search criteria myWorkbench will list all the files.

10. myWorkbench System Folders

There are several system folders that myWorkbench creates.



These system folders cannot be deleted. You can delete the contents. You should use myWorkbench Media Type Manager to register .doc, .wav, .jpg, .gif and other files to the system folder.

11. View files with MultiMail Plugins for PalmOS® 3.5 and 4.x only

myWorkbench uses MultiMail Pro® plugins to view files on the card. Currently myWorkbench supports the following file formats: .doc, .csv, .text, .html, .c, .cpp and .h files.

You do not required to install MultiMail Pro® on your Palm. Here are the links to all the supported plugins. Download them and install them on to your Palm. These plugins may not be available anymore. Please contact us at support@toysoft.ca if you need assistant.

MSWord Viewer Freeware

<http://www.palmgear.com/software/showsoftware.cfm?sid=48337320020727053013&prodID=1876>

HTML Viewer Freeware

<http://www.palmgear.com/software/showsoftware.cfm?sid=48337320020727053013&prodID=2008>


Text Viewer Freeware

<http://www.palmgear.com/software/showsoftware.cfm?sid=48337320020727053013&prodID=1782>

CSV Viewer Shareware

<http://www.palmgear.com/software/showsoftware.cfm?sid=48337320020727053013&prodID=3486>

myWorkbench User Documentation	Toysoft, Inc.	Page 32 of 40
--------------------------------	---------------	---------------

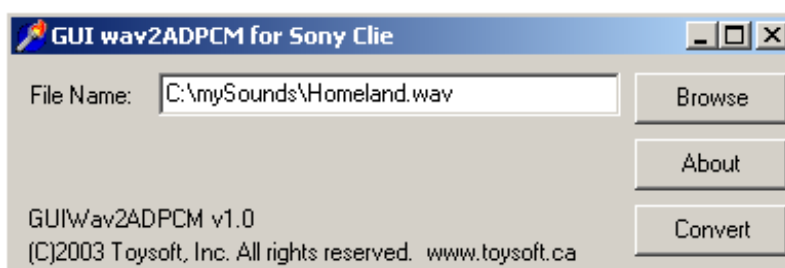
To view a file you first select the file and then tap on the Launch icon  in the Explorer window. myWorkbench will then attempt to launch the MultiMail plugin.

12. Converting Wave file to Sony® Clie Format

Included in the myWorkbench archive there is the Windows **ConvertPCM.exe** application. In order for myWorkbench to use wave files you must convert the wave file to following format:

16bit mono 8 khz

A good Windows sound converter application is GoldWave and you can get a trial version at <http://www.goldwave.com/>



Use the **Browse** button to browse to the wave file. Click on the **Convert** button to convert the file. After conversion the file will be saved in the same folder. The extension **.bin** will be added.

HotSync® the Wave .bin File

The converted wave file cannot be synced to the Palm® main memory. It must be synced to the Memory Stick. Do the following:

On the Palm

Launch myWorkbench to register the new .bin file extension.

On Windows Desktop

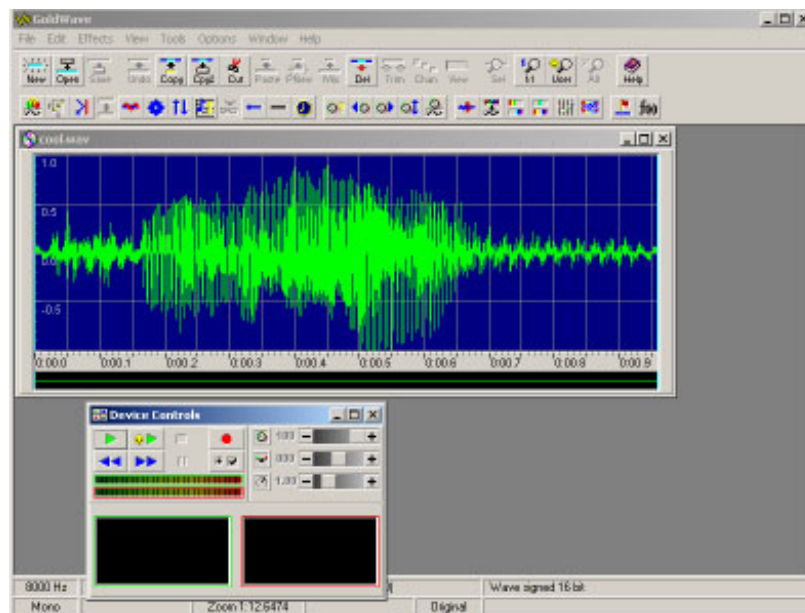
1. Open the InstallTool from your desktop computer
2. Browse to the converted wave file

3. Drag and drop the wave file on to InstallTool
4. In InstallTool the Destination will read Memory Stick
5. Press the HotSync® button on the cradle. The file will be synced to the folder /Audio on the Memory Stick.
6. Launch wavAlarms and Test or Player the file.

Note: The wave file can be any size as long as you have enough main memory to load it. If you only have 1 meg of free main memory and the wave file on the card is 2 megs then wavAlarms will not be able to play it.

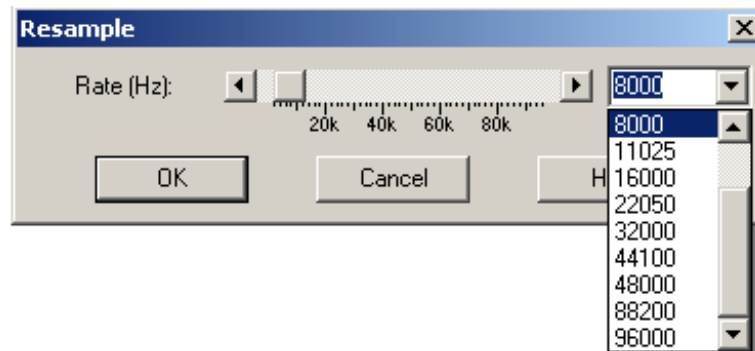
12.1 Converting a Wave File using GoldWave Tutorial

In the included zip main archive you will find a folder called **SonyTutorial**. In the folder is a wave file named Cool.wav. Launch GoldWave and load in the wave file Cool.wav. In GoldWave you will see the following screen.



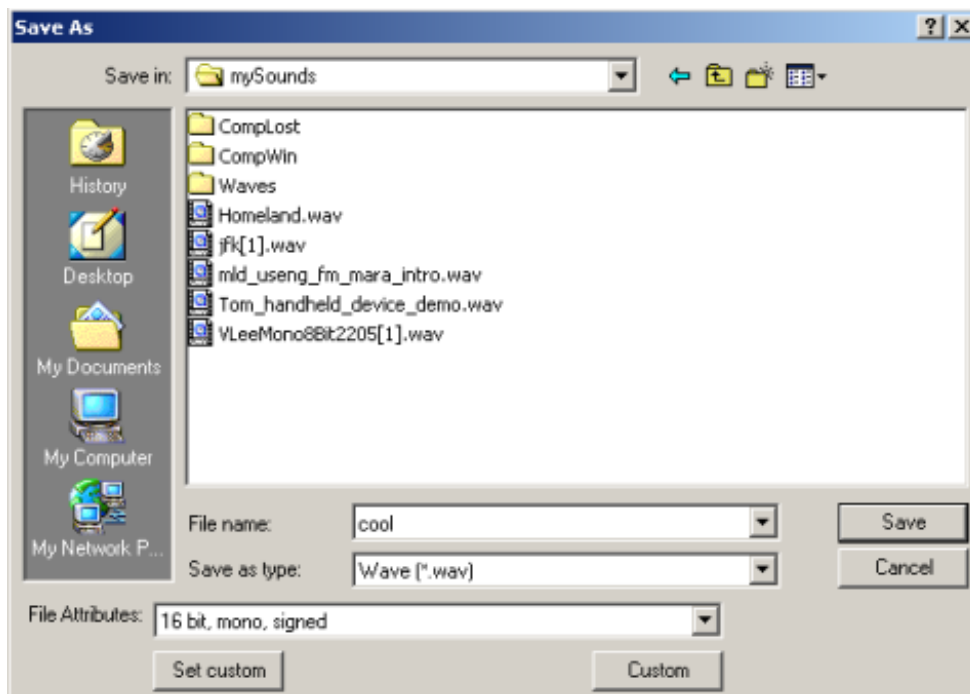
Do following:

1. In GoldWave select the **Effects** menu
2. Select **Resample** menu item. The following window will be opened.



In the Rate (Hz) drop down window select 8000 as shown in the above diagram. For the Sony® you must select 8000 as high rate will give you very poor results. Select the **OK** button.

3. The wave file is now re-sampled to the rate that Sony® Clie and play.
4. Select the **File->Save As** menu and the following save as dialog will be displayed.



Enter the filename as **Cool8k.wav**. Make sure you set the following:

- Save as type: Wave (*.wav)
- File Attributes: 16 bit, mono, signed

Select **Save** when you are done.

5. Launch **ConvertPCM** application



Select the **Browse** button and browse for the file **Cool8k.wav**. Select the **Convert** button. A new file called **Cool8k.wav.bin** file will be created in the folder where Cook8k.wav is located.

6. Following the section in **HotSync® the Wave .bin File** from above to HotSync® the wave file to the Palm.

12.2 Download Wave Files

There are many sites on the Internet where you can download wave files. Here are some sites:

- <http://www.aleshas.com/> Sound files and ringtones. Supports many Palm devices
- <http://www.allwavs.com> Files are compressed. You need to uncompress them.
- <http://www.wavcentral.com>
- <http://www.wavethemes.org>
- <http://www.geocities.com/Hollywood/Theater/6219>

13. Viewing JPG on PalmOS® 5.x Palms

With myWorkbench 5.0 you can view jpg files on the memory card. You need to install the jpg plugin myWB.JPG.prc to RAM. myWB.JPG.prc can not be stored on the card. The plugin can not view progressive images or very large images. The plugin is designed to view images from the digital camera or the Palms camera.

For large image the image will be scaled to fit screen resolution. It varies from device to device. On the Palm® Tungsten it will be 320x320 and on the Sony® NX it will be 320x320 or 320x480.

Note: if the plugin can not read the image it will crash your palm.

Viewing JPG

To view an image just double tap on the image or select the file and then select the Launch icon on the toolbar. The plugin will then display the picture.



myWB.JPG viewer

Image Zoom Support

The plugin has basic zooming. When zoomed the image will not be centered on some Palms like the Tungsten T. On the Sony® device eg: TG50 you can zoom up to 3 levels and do scrolling. To scroll, tap on the screen and move the stylus around.

To exit the plugin press any hard key button or the home key to return to myWorkbench.

14. User License

(a) Toysoft, Inc. Hereby grants you a non-exclusive license to use its accompanying software product ("Software") according to the following agreement:

(b) You may: use the Software on only one (1) PalmOS® handheld computer.

(c) You may not: permit other individuals to use the Software except under the terms listed above; modify, translate, reverse engineer, decompile, disassemble, or create derivative works based on the Software; copy the Software (except for back-up purposes); rent, lease or otherwise transfer rights to the Software; or remove any proprietary notices or labels on the Software.

Toysoft, Inc. reserves all rights not expressly granted to Licensee.

15. Copyright

Ownership rights and intellectual property rights in and to the Software shall remain in Toysoft, Inc. The Software is protected by the copyright laws of Canada and international copyright treaties. This License gives you no rights to such content.

EruWare Compact Flash Driver ©2003 EruWare.

JPG © Independent JPEG Group.

Armlet port by Matthew Fleming.

16. Disclaimer

(a) **DISCLAIMER OF WARRANTY.** The Software is provided on an "AS IS" basis, without warranty of any kind, including without limitation the warranties of merchantability, fitness for a particular purpose and non-infringement.

(b) You and not Toysoft, Inc. assume the entire cost of any service and repair. In addition, mechanism implemented by the Software may have inherent procedural limitations, and you must determine that the Software sufficiently meets your requirements.

(c) This disclaimer of warranty constitutes an essential part of the agreement.

17. Limitation of Liability

UNDER NO CIRCUMSTANCES AND UNDER NO LEGAL THEORY, TORT, CONTRACT, OR OTHERWISE, SHALL TOYSOFT, INC. OR ITS SUPPLIERS OR RESELLERS BE LIABLE TO YOU OR ANY OTHER PERSON FOR ANY INDIRECT, SPECIAL, INCIDENTAL, OR CONSEQUENTIAL DAMAGES OF ANY CHARACTER INCLUDING, WITHOUT LIMITATION DAMAGES FOR LOSS OF GOODWILL, WORK STOPPAGE, COMPUTER FAILURE OR MALFUNCTION, OR ANY AND ALL OTHER COMMERCIAL DAMAGES OR LOSSES.

18. Termination of License

This license will terminate automatically if you fail to comply with the limitations described above. On termination, you must destroy all copies of the Software

19. Technical Support

For technical support please send email to support@toysoft.ca or visit our website at www.toysoft.ca

20. Zlib compression library

Copyright (C) 1995-1998 Jean-loup Gailly and Mark Adler
Copyright (C) 1995-2002 Jean-loup Gailly.

Jean-loup Gailly Mark Adler
jloup@gzip.org madler@alumni.caltech.edu

Zlib armlet port by

Copera
650 Castro Street
Suite 120-216
Mountain View, CA 94041

Copyright © 2003
<http://www.copera.com>